



The Drain Report

When It Rains It Pours!

By: Ken Kase

For some time now we have been telling you about infiltration and inflow (I & I). I & I is water that enters the sewer from sources such as leaky underground pipes, roof drains, sump pumps, footing drains and just about any other source of water that does not originate from a plumbing fixture.

When it rains a lot, like it did this November, I & I can be a significant problem for a sewer! Sanitary sewer systems are not designed to handle surface and ground water. The system designed to safely convey your sewage away from your home or business to the treatment facility can become inundated. Sometimes the flow is greater than the pipes can handle and they can back up resulting in sewer overflows.



Rain water and ground water should not find its way into the sanitary sewer!



Sanitary Sewer Overflow

Sewers can overflow when surface water and ground water get in the sewer.

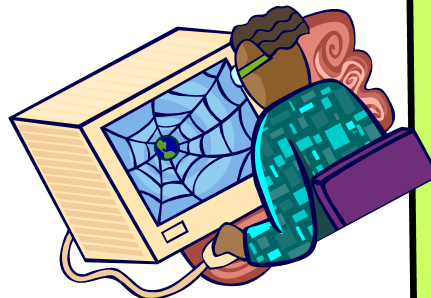
We want to prevent these overflows from happening, but we need your help. Studies indicate that most I & I originates on private property. You may not even be aware that you have a connection to the sewer that you should not have. If you are not sure please ask us. We are very willing to come to your property to help determine whether or not you are an I & I contributor.

Come Visit Our Website

By: Ken Kase

In order to serve you better we now have a website. If you want to contact us or get a form or find out more information pertaining to the District you can go to www.midwaysewer.org.

If there is some information you would like to see on our website please let us know. If you prefer, you can still choose to call us or come to our office.



Inside this issue:

The I & I Problem	1
Check out our website	1
Who Do You Call When The Drain Is Clogged?	2

Special points of interest:

- Midway Sewer District has one of the lowest monthly rates in the state.
- The Board meets the 2nd and 4th Wednesday of each month. Please contact the office for the meeting time.
- Midway serves the Cities of Des Moines, SeaTac, Kent, Federal Way, Normandy park, Burien, and the Port of Seattle's SeaTac Airport.
- We know our customers and they know us.
- You can expect fast personal service when you need it.
- Our employees care about their customers.
- We have a single focus of providing quality sanitary sewer service and have been in business since 1946.

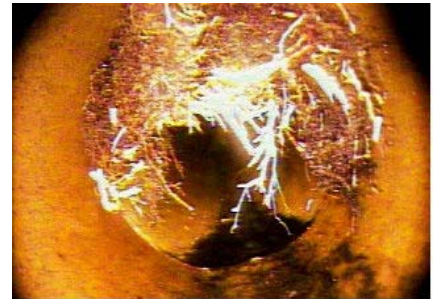
Who Do You Call When The Drain Is Clogged?

By: Vince Koester



The Midway Sewer District operates, and is responsible for, over 135 miles of sewer pipelines. District crews work year round maintaining these pipelines. There is staff available or on call 24 hours a day, 7 days a week. The pipeline that connect your home or business to our system of sewers is known as a side sewer or lateral sewer. The Property owner, not the District, is responsible for this segment of the sewer system.

It is very common for a sewer problem to develop in the side sewer. Please call the District immediately if sewage is coming into your home when you are not using any water. If you are experiencing slow drainage or a blockage in only some of your plumbing fixtures it is likely that the problem is in your side sewer or plumbing. You are always welcome to contact the District anytime you suspect a problem with the sewer. However, if your drain is slow please contact us during regular business hours.



Tree roots growing inside a sewer is just one of many common problems found in side sewers.

There are several different types of services that you may need if your sewer has a problem. Rooter services and drain cleaners can unclog your sewer using water pressure or mechanical snakes. Plumbers repair leaky and broken fixtures and install new and remodeled systems. Side sewer contractors repair or replace structural problems. Many of these companies can provide a combination of these services. It may be beneficial for you to get at least three written quotes before selecting a contractor. The District maintains a list of contractors who have satisfied the license, bonding, and insurance requirements necessary to obtain a permit.

It is very helpful to have a written report of what was causing the problem, where it was found, and what was done to correct it. Some contractors may suggest a video camera inspection of your side sewer. This will not be of much use if your line is blocked and full of water. Camera inspections are more useful after the blockage has been cleared. Transponders can be very useful for pinpointing the location of underground root intrusions and structural damage.

You can also choose to do the sewer repair yourself. Rental agencies have portable rooter machines available for rent. Local home improvement stores also have a variety of tools and products for you to choose.

Please keep in mind that any addition to or structural repair of a side sewer requires a permit issued by the District. Repair permits range in price from free to \$50. The District must inspect and document the repair before it is covered up. The permit process is intended to protect your side sewer and the entire community's sewer system from damage that can occur from improperly repaired sewers. Please contact the District office at (206) 824-4960 for more details.

"It is very common for a sewer problem to develop in the side sewer."

Board of Commissioners



George Landon Jack Hendrickson Vince Koester



Midway Sewer District

PO Box 3487
3030 South 240th Street
Kent, WA 98089
<http://www.midwaysewer.org/>
206-824-4960